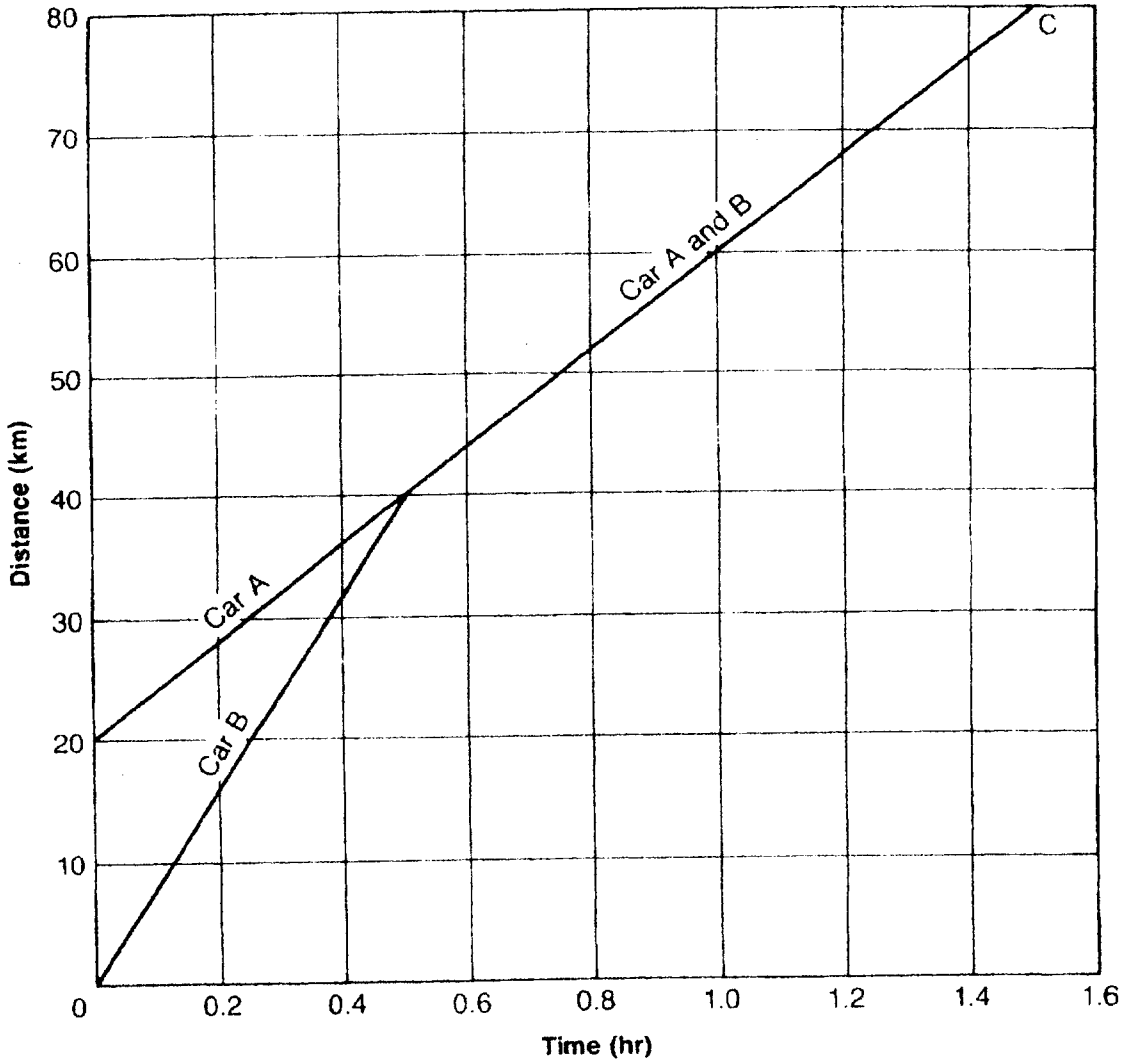


### A Speedy Journey

Use the graph below to answer the questions about the journeys of two cars.



1. How far did car A travel before it met car B? \_\_\_\_\_
2. How long had the two cars been traveling before they met? \_\_\_\_\_
3. How far did both cars travel at the same speed? \_\_\_\_\_
4. How long did it take both cars to get to point C? \_\_\_\_\_
5. Which car had constant speed? \_\_\_\_\_? What was its speed? \_\_\_\_\_
6. What were the speeds of the other car? \_\_\_\_\_